



REACT

Rapid Evaluation Areal Connection Tool

**Digital Spatial Intelligence for
UK Energy Developers**





Introducing REACT

The UK grid is changing rapidly. Developers face long queues, volatile timelines, limited transparency, and uncertainty driven by Connection Reform and CP30. With 700+ GW of projects competing for around 75 GW of estimated available network capacity, gaining clarity early is essential.

REACT provides spatially driven insights into where projects stand the best chance of connecting - supporting early feasibility assessments, reducing planning risk, and enabling confident decision-making in a reforming system.

Designed for energy developers. Built for the realities of GB connections.

What REACT Delivers:

Early spatial insight:

- Reveal where projects have potential viability before formal applications.

Constraint visibility:

- Understand cumulative capacity, congestion, and connection sequencing.

Reform-ready tools:

- Designed to support CP30 and the evolving Connection Reform framework.

Developer-centered intelligence:

- Crisp, intuitive visualisations that reveal network pinch-points, opportunities, and risks.

The result:

- Reduced uncertainty, smarter site selection and stronger evidence for investment decisions.



Built in collaboration with SSEN-Transmission and other partners, funded by the Ofgem Strategic Innovation Fund



REACT helps developers move faster, prioritise with confidence, and reduce project planning uncertainty.



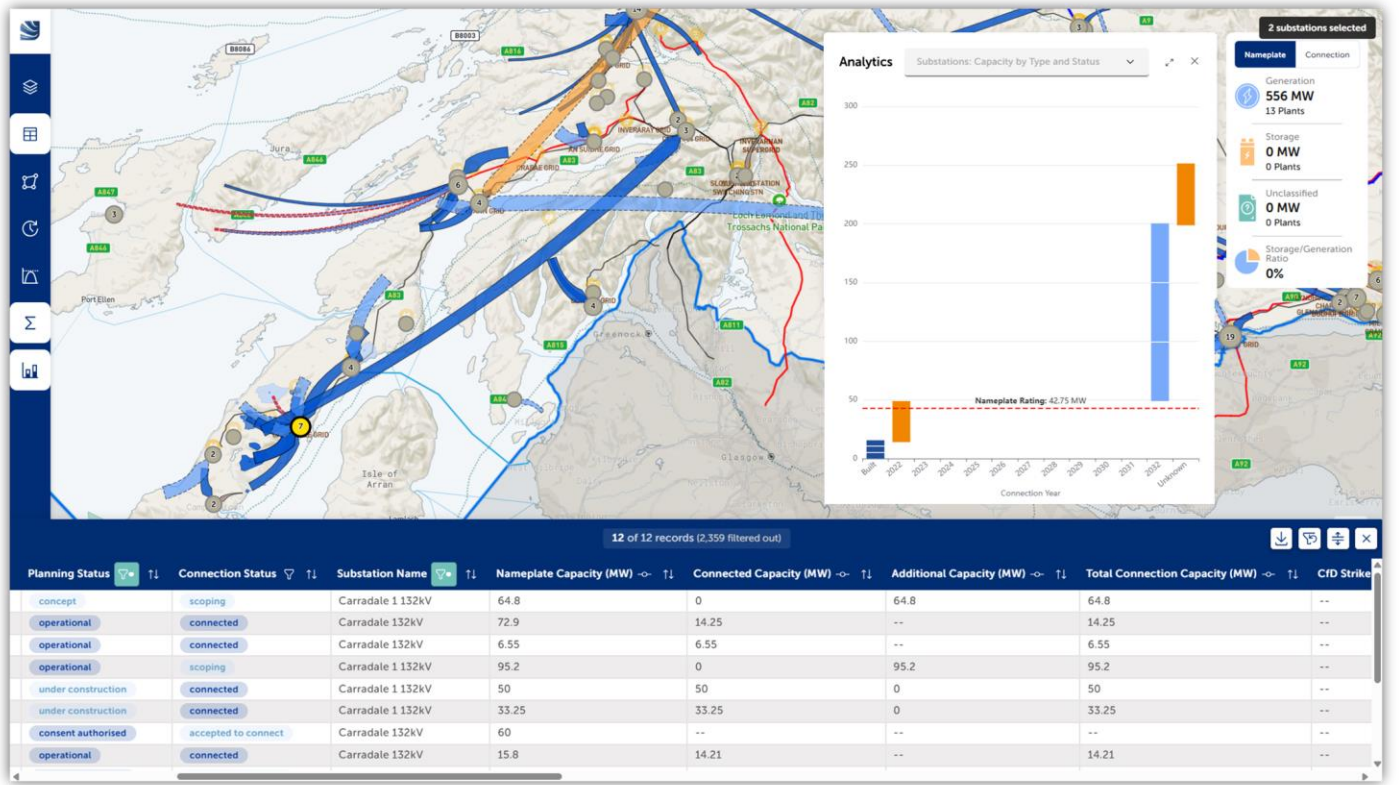
What is REACT?

A spatial intelligence platform shaped by UK network operators. Created through a multi-year collaboration with SSEN Transmission and shaped by National Grid and SGN. REACT addresses core challenges across the sector:

A system-wide planning model:

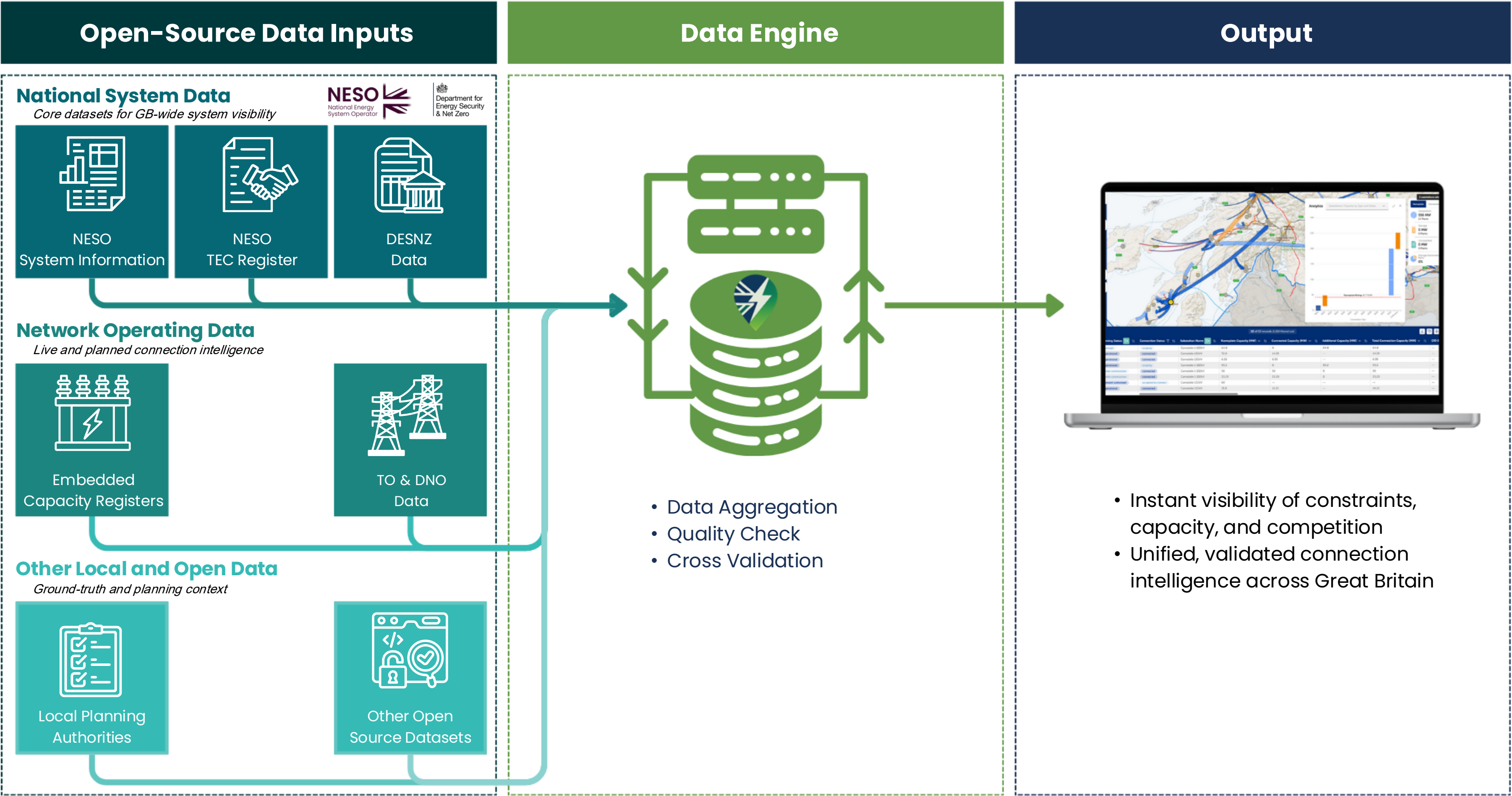
- Power generation, storage, and demand
- Circuit details, and substation capacity
- Local constraints, land use, and developer success
- Environmental and siting limitations

Together, these insights form the foundation of the REACT spatial intelligence platform.



REACT brings system-wide complexity into a single, developer-friendly view that streamlines early strategic assessment.

Where does REACT data come from?





How REACT Supports Project Developers and Why it Matters

What REACT Does

System Wide Thinking

Integrated electricity, gas, land use & constraints.

Early Stage Assessment

Understand viability before committing resources.

Trusted Data Frameworks

Accessible, high-quality, interoperable data.

Interactive Spatial Modelling

Visualise circuits, constraints, flows & opportunities.



How it Benefits Developers



Pinpoint the strongest connection opportunities



Identify optimal connection points faster



Understand constraints & competition instantly



Make smarter early site decisions



Build stronger, evidence-backed applications

All delivered through a single, unified spatial intelligence platform.



Join REACT as a Development Partner



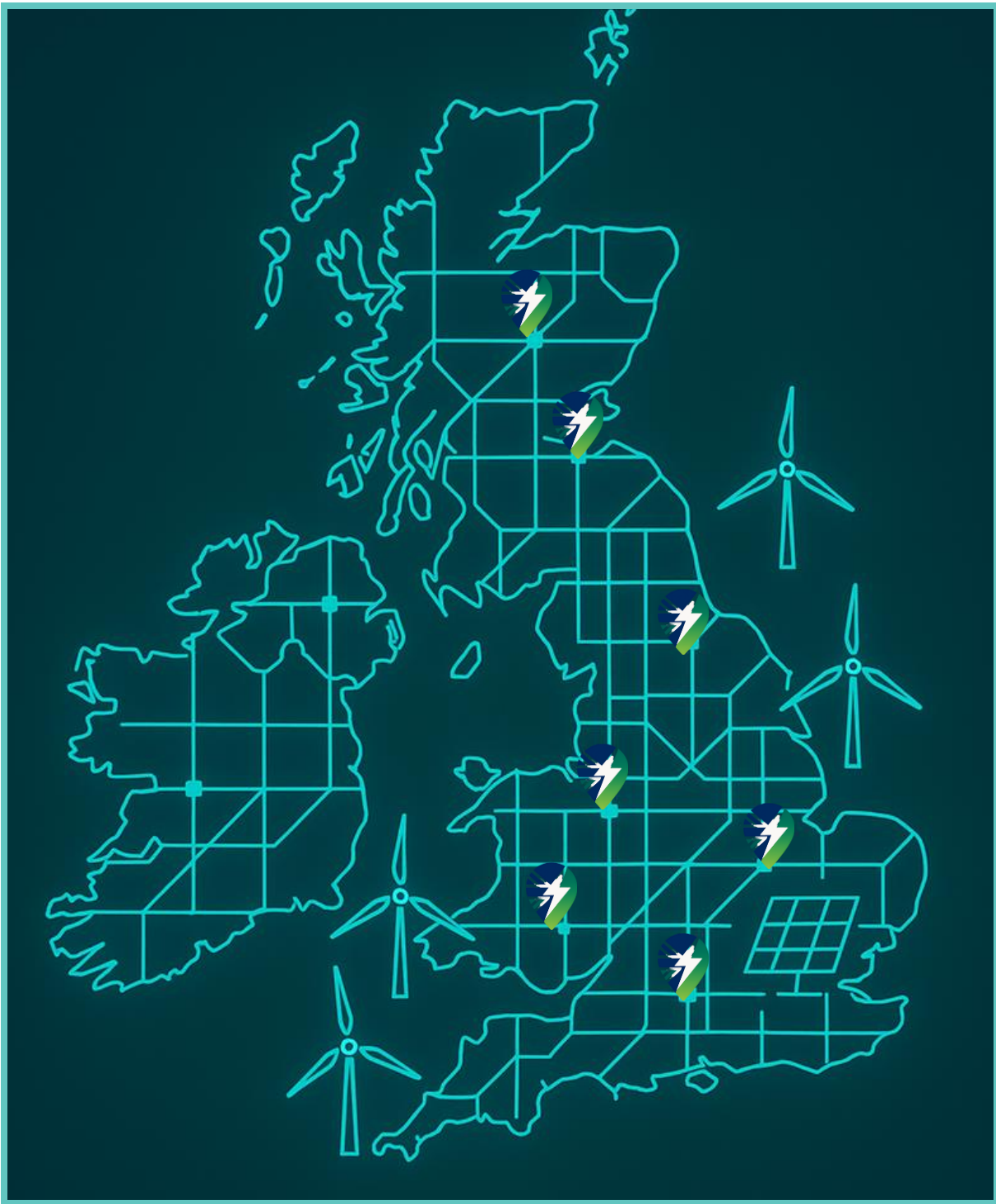
By becoming a Development Partner your organisation will gain:

- ✓ Early access to the GB-wide REACT tool
- ✓ Direct influence over future development features and analytics
- ✓ Discounted pricing for early sign-up*
- ✓ Options for single-user or enterprise-level access options*
- ✓ Annual access & maintenance plan*

*details under review

How to get started with REACT

- ✓ Contact us to request a demo of full platformer discuss early adopter access
- ✓ Complete our **Expression of Interest form**





REACT

Rapid Evaluation Areal Connection Tool



Olsights develops advanced spatial analytics and digital planning tools that help energy developers and network operators make faster, data-driven decisions. Through its intuitive mapping platform, Olsights visualises infrastructure, constraints, and opportunities to support more effective project planning and accelerate the delivery of clean energy systems. With a focus on clarity, usability, and real-world insight, Olsights enables organisations to navigate the energy transition with confidence.

[**olsights.com**](https://olsights.com)



MapStand is a geospatial intelligence company providing clear, real-time visibility of global energy infrastructure and market activity. Its digital mapping platform brings together high-quality spatial data and expert curation, helping developers, operators, and policymakers make faster, better-informed decisions. By simplifying complex energy data, MapStand supports more effective planning and accelerates the transition to a net-zero energy system.

[**MapStand.com**](https://MapStand.com)